

IMPACT SOCKET



TEKIRO IMPACT SOCKETS

- Two different lengths selection (Standard & Deep).
- The deep type are of a thin wall design that can be used in confined spaces.
- In addition to the usual engraved stamp, the large easy-to-read size indication is displayed.

SPECIFICATION

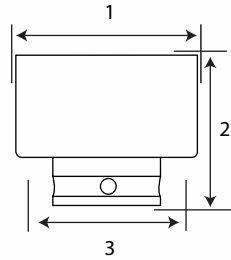
TEKIRO impact sockets are manufactured from the highest quality material using the latest technique, and exceeds international standards.



3/8" DR. IMPACT SOCKET 6 PT

3/8" DR. KUNCI SOCK IMPACT 6 PT

ITEM CODE	SIZE	1 (mm)	2 (mm)	3 (mm)	WEIGHT (gr)	QTY / BOX INNER/MASTER
IS-IS1600	17 mm	24	32	22	83,5	300 pcs
IS-IS1601	19 mm	27	30	20	70	150 pcs
IS-IS1602	22 mm	31	32	22	87	150 pcs



- Material is Chrome molybdenum steel with proper heat treatment for extra durability and strength
- Manganese Phosphate coating to help resist corrosion and ensure an extra life time of use

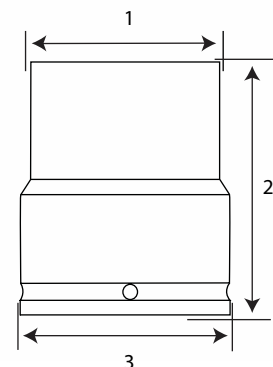


1/2" DR. IMPACT SOCKET 6 PT

1/2" DR. KUNCI SOCK IMPACT 6 PT

ITEM CODE	SIZE	1 (mm)	2 (mm)	3 (mm)	WEIGHT (gr)	QTY / BOX INNER/MASTER
IS-IS0642	8 mm	15	39	24	70	10 pcs
IS-IS0643	9 mm	16	39	25	70	10 pcs
IS-IS0644	10 mm	18	39	25	70	10 pcs
IS-IS0645	11 mm	18	39	25	71	10 pcs
IS-IS0646	12 mm	20	38	25	74	10 pcs
IS-IS0647	13 mm	21	39	25	75	10 pcs
IS-IS0648	14 mm	22	39	30	80	10 pcs
IS-IS0649	15 mm	23	40	25	77	10 pcs
IS-IS0650	16 mm	24	39	30	117	10 pcs
IS-IS0651	17 mm	25	39	29	124	10 pcs
IS-IS0652	18 mm	26	40	31	120	10 pcs
IS-IS0653	19 mm	28	38	30	118	10 pcs
IS-IS0654	20 mm	29	39	30	123	5 pcs
IS-IS0655	21 mm	30	39	30	117	5 pcs
IS-IS0656	22 mm	31	39	29	129	5 pcs
IS-IS0657	23 mm	33	37	30	130	5 pcs
IS-IS0658	24 mm	34	50	30	136	5 pcs
IS-IS0659	25 mm	35	39	30	149	5 pcs
IS-IS0660	26 mm	36	40	30	137	5 pcs
IS-IS0661	27 mm	37	42	31	162	5 pcs
IS-IS0662	28 mm	40	45	30	187	5 pcs
IS-IS0663	29 mm	41	48	30	214	5 pcs
IS-IS0664	30 mm	41	48	30	200	5 pcs
IS-IS0665	32 mm	44	48	30	211	5 pcs

- Material is Chrome molybdenum steel with proper heat treatment for extra durability and strength
- Manganese Phosphate coating to help resist corrosion and ensure an extra life time of use



WRENCH

TORQUE

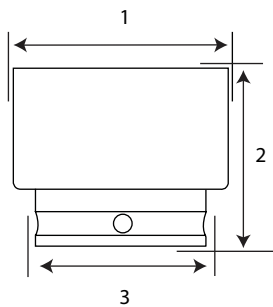
SOCKET

IMPACT SOCKET

PLIER

SCREWDRIVER

- Material is Chrome molybdenum steel with proper heat treatment for extra durability and strength
- Manganese Phosphate coating to help resist corrosion and ensure an extra life time of use



3/4" DR. IMPACT SOCKET 6 PT

3/4" DR. KUNCI SOCK IMPACT 6 PT

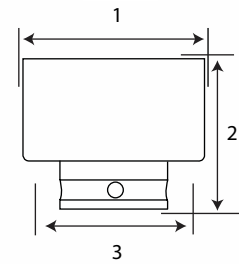
ITEM CODE	SIZE	1 (mm)	2 (mm)	3 (mm)	WEIGHT (gr)	QTY / BOX INNER/MASTER
IS-IS0666	17 mm	28	50	37	252	5 / 75 pcs
IS-IS0667	18 mm	29	52	37	238	5 / 75 pcs
IS-IS0668	19 mm	31	51	40	275	5 / 75 pcs
IS-IS0669	21 mm	36	49	40	300	5 / 75 pcs
IS-IS0670	22 mm	36	50	40	302	5 / 75 pcs
IS-IS0671	23 mm	36	51	40	304	4 / 60 pcs
IS-IS0672	24 mm	38	51	40	299	4 / 60 pcs
IS-IS0673	26 mm	39	51	40	308	4 / 60 pcs
IS-IS0674	27 mm	41	52	41	333	4 / 60 pcs
IS-IS0675	28 mm	43	54	43	362	4 / 60 pcs
IS-IS0676	29 mm	44	55	44	393	4 / 60 pcs
IS-IS0677	30 mm	45	54	44	405	4 / 60 pcs
IS-IS0678	32 mm	48	56	44	456	4 / 60 pcs
IS-IS0679	33 mm	50	57	44	485	4 / 60 pcs
IS-IS0680	34 mm	52	56	44	504	3 / 36 pcs
IS-IS0681	35 mm	51	56	44	472	3 / 36 pcs
IS-IS0682	36 mm	52	56	43	514	3 / 36 pcs
IS-IS0683	38 mm	55	56	43	540	3 / 36 pcs
IS-IS0684	41 mm	59	57	44	609	3 / 36 pcs
IS-IS0685	46 mm	65	62	43	749	2 / 20 pcs
IS-IS0686	50 mm	70	67	43	881	2 / 20 pcs
IS-IS0687	52 mm	75	72	54	1,130	1 / 20 pcs
IS-IS0688	54 mm	77	73	54	1,247	1 / 20 pcs
IS-IS0689	55 mm	77	74	54	1,217	1 / 24 pcs
IS-IS0690	57 mm	80	75	54	1,300	1 / 15 pcs
IS-IS0691	58 mm	82	80	54	1,350	1 / 15 pcs
IS-IS0692	59 mm	82	75	55	1,380	1 / 15 pcs
IS-IS0693	60 mm	82	80	60	1,517	1 / 15 pcs
IS-IS0694	62 mm	85	81	54	1,450	1 / 12 pcs
IS-IS0695	65 mm	89	80	55	1,500	1 / 12 pcs
IS-IS0696	70 mm	96	86	54	1,845	1 / 12 pcs

1" DR. IMPACT SOCKET 6 PT

1" DR. KUNCI SOCK IMPACT 6 PT

ITEM CODE	SIZE	1 (mm)	2 (mm)	3 (mm)	WEIGHT (gr)	QTY / BOX INNER/MASTER
IS-IS0697	30 mm	49	54	42	691	3 / 36 pcs
IS-IS0698	32 mm	50	55	42	701	3 / 36 pcs
IS-IS0699	36 mm	56	65	54	751	4 / 24 pcs
IS-IS0700	38 mm	56	65	55	781	4 / 24 pcs
IS-IS0701	41 mm	63	65	54	812	4 / 16 pcs
IS-IS0702	42 mm	62	65	54	841	2 / 20 pcs
IS-IS0703	46 mm	69	74	54	1,040	4 / 12 pcs
IS-IS0704	48 mm	68	74	54	1,077	4 / 12 pcs
IS-IS0705	50 mm	74	75	54	1,157	4 / 12 pcs
IS-IS0706	52 mm	75	70	54	1,180	1 / 20 pcs
IS-IS0707	55 mm	80	85	55	1,500	1 / 12 pcs
IS-IS0708	60 mm	92	93	54	1,740	1 / 10 pcs
IS-IS0709	65 mm	93	93	54	2,007	1 / 10 pcs
IS-IS0710	70 mm	100	99	54	2,461	1 / 10 pcs
IS-IS0711	75 mm	105	101	85	3,652	1 / 6 pcs
IS-IS0712	80 mm	111	100	85	3,780	1 / 6 pcs
IS-IS0713	85 mm	117	102	86	4,150	1 / 6 pcs
IS-IS0714	90 mm	124	107	85	4,472	1 / 5 pcs
IS-IS0715	95 mm	128	104	85	4,515	1 / 5 pcs
IS-IS0716	100 mm	137	105	95	5,320	1 / 4 pcs

- Material is Chrome molybdenum steel with proper heat treatment for extra durability and strength
- Manganese Phosphate coating to help resist corrosion and ensure an extra life time of use

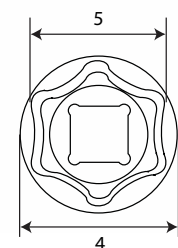
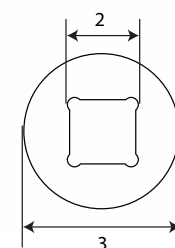
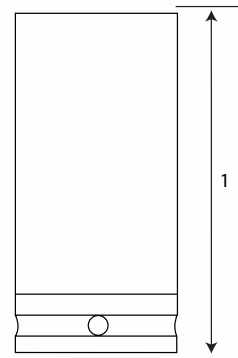


1/2" DR. DEEP IMPACT SOCKET 6 PT

1/2" DR. KUNCI SOCK DEEP IMPACT 6 PT

ITEM CODE	SIZE	1 (mm)	2 (mm)	3 (mm)	4 (mm)	5 (mm)	WEIGHT (gr)	QTY / BOX INNER/MASTER
IS-DP0717	8 mm	77	13	24	14	8	117	5 pcs
IS-DP0718	9 mm	77	13	25	16	9	117	5 pcs
IS-DP0719	10 mm	77	13	24	17	10	138	5 pcs
IS-DP0720	11 mm	78	13	25	19	11	135	5 pcs
IS-DP0721	12 mm	78	13	24	19	12	143	5 pcs
IS-DP0722	13 mm	79	13	24	21	13	152	5 pcs
IS-DP0723	14 mm	78	13	23	22	14	150	5 pcs
IS-DP0724	15 mm	78	13	24	24	15	155	5 pcs
IS-DP0725	16 mm	78	13	24	25	16	156	5 pcs
IS-DP0726	17 mm	77	13	25	25	17	196	5 pcs
IS-DP0727	18 mm	79	13	27	28	18	232	5 pcs
IS-DP0728	19 mm	78	13	28	27	19	207	5 pcs
IS-DP0729	20 mm	79	13	29	30	20	245	5 pcs
IS-DP0730	21 mm	78	13	29	29	21	238	5 pcs
IS-DP0731	22 mm	78	13	30	31	22	275	5 pcs
IS-DP0732	23 mm	78	13	30	31	23	261	5 pcs
IS-DP0733	24 mm	79	13	30	32	24	292	4 pcs
IS-DP0734	26 mm	78	13	30	35	26	285	4 pcs
IS-DP0735	27 mm	78	13	30	37	27	364	4 pcs
IS-DP0736	28 mm	78	13	30	37	28	293	4 pcs
IS-DP0737	29 mm	78	13	30	39	29	334	3 pcs
IS-DP0738	30 mm	78	13	30	42	30	457	3 pcs
IS-DP0739	32 mm	78	13	30	43	32	449	3 pcs

- Material is Chrome molybdenum steel with proper heat treatment for extra durability and strength
- Manganese Phosphate coating to help resist corrosion and ensure an extra life time of use



WRENCH

TORQUE

SOCKET

IMPACT SOCKET

PLIER

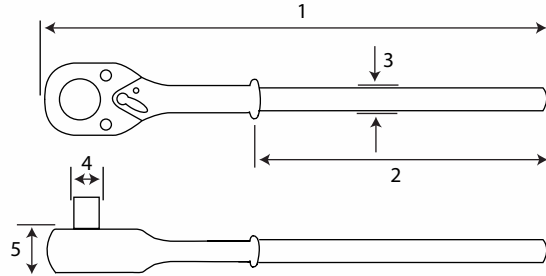
SCREWDRIVER



RATCHET HANDLE IMPACT

RATCHET HANDLE IMPACT

ITEM CODE	SIZE	1 (mm)	2 (mm)	3 (mm)	4 (mm)	5 (mm)	WEIGHT (gr)	QTY / BOX INNER/MASTER
IS-RH0740	3/4"	500	122	23	18	28	2.700	1 / 10 pcs
IS-RH0741	1"	665	137	28	20	33	4.650	3 / 6 pcs



- Material is Chrome molybdenum steel with proper heat treatment for extra durability and strength
- Manganese Phosphate coating to help resist corrosion and ensure an extra life time of use
- Quick-release drive tang locks securely on to sockets so they won't accidentally fall off

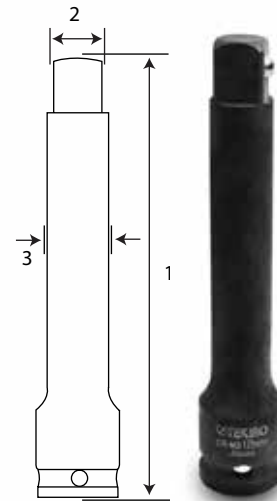


IMPACT EXTENTION BAR

SAMBUNGAN SOCK IMPACT

ITEM CODE	SIZE	1 (mm)	2 (mm)	3 (mm)	WEIGHT (gr)	QTY / BOX INNER/MASTER
IS-EB0742	1/2" X 3"	78	16	12	150	1 / 120 pcs
IS-EB0743	1/2" X 5"	128	16	12	230	12 / 72 pcs
IS-EB0744	1/2" X 10"	252	16	12	430	12 / 48 pcs
IS-EB0745	3/4" X 4"	98	25	19	568	5 / 30 pcs
IS-EB0746	3/4" X 10"	254	25	19	1,173	5 / 20 pcs

- Material is Chrome molybdenum steel with proper heat treatment for extra durability and strength
- Manganese Phosphate coating to help resist corrosion and ensure an extra life time of use

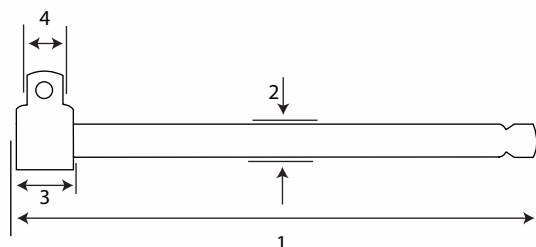


IMPACT SLIDING T BAR

GAGANG SOCK T IMPACT

ITEM CODE	SIZE	1 (mm)	2 (mm)	3 (mm)	WEIGHT (gr)	QTY / BOX INNER/MASTER
IS-SL0747	3/4" X 20"	510	20	39	1,578	5 / 10 pcs
IS-SL0756	1" X 22"	563	28	49	3,239	1 / 6 pcs

- Material is Chrome molybdenum steel with proper heat treatment for extra durability and strength
- Manganese Phosphate coating to help resist corrosion and ensure an extra life time of use
- Sliding socket head can apply more leverage and torque



WRENCH

TORQUE

SOCKET

IMPACT SOCKET

PLIER

SCREWDRIVER

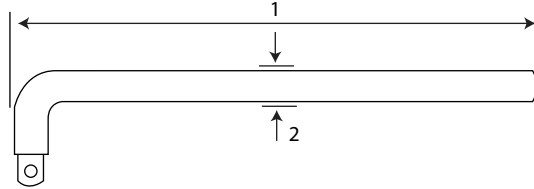
- Material is Chrome molybdenum steel with proper heat treatment for extra durability and strength
- Manganese Phosphate coating to help resist corrosion and ensure an extra life time of use
- Spring loaded ball bearing to secure the socket



IMPACT OFFSET HANDLE

GAGANG SOCK L IMPACT

ITEM CODE	SIZE	1 (mm)	2 (mm)	WEIGHT (gr)	QTY / BOX INNER/MASTER
IS-OH0748	3/4" X 20"	532	25	2,101	5 / 10 pcs
IS-OH0757	1" X 26"	690	34	5,399	1 / 4 pcs



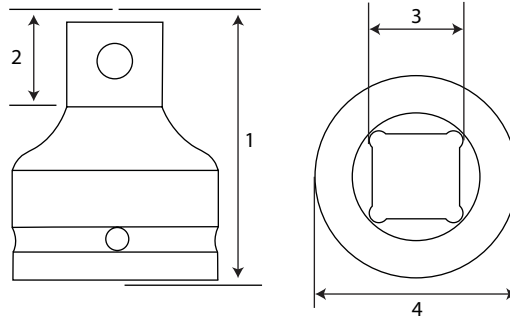
- Material is Chrome molybdenum steel with proper heat treatment for extra durability and strength
- Manganese Phosphate coating to help resist corrosion and ensure an extra life time of use
- Spring loaded ball bearing to secure the socket



IMPACT ADAPTOR

IMPACT ADAPTOR

ITEM CODE	SIZE	1 (mm)	2 (mm)	3 (mm)	4 (mm)	WEIGHT (gr)	QTY / BOX INNER/MASTER
IS-AI0749	3/8 F x 1/2 M	38	14	9	21	65	60 / 240 pcs
IS-AI0750	1/2 F x 3/8 M	35	11	13	21	51	60 / 240 pcs
IS-AI0751	1/2 F x 3/4 M	48	19	13	30	165	40 / 160 pcs
IS-AI0752	3/4 F x 1/2 M	74	22	26	53	659	12 / 48 pcs
IS-AI0753	3/4 F x 1 M	63	25	20	43	435	12 / 48 pcs
IS-AI0754	1 F x 3/4 M	75	21	26	54	658	6 / 24 pcs



3/4" DR. IMPACT SOCKET SET 6 PT 17 PCS

3/4" DR. KUNCI SOCK IMPACT SET 6 PT 17 PCS

ITEM CODE	SIZE
IS-SE0755	21 - 50 MM (6PT)



SIZE	CONTENT	WEIGHT (gr)	QTY / BOX INNER/MASTER
21 - 50 mm (6 PT)	1 pcs 3/4" DR. Ratchet Handle 20"	16,500	1 set
	3/4" DR. Impact Extension Bar 4"		
	1 pcs 3/4" DR. Impact Extension Bar 10"		
	1 pcs 3/4" DR. Impact Sliding T Bar 20"		
	13 pcs 1/2" DR. Socket		
	21 mm, 22 mm, 23 mm, 24 mm		
	27 mm, 30 mm, 32 mm, 36 mm		
	38 mm, 41 mm, 46 mm, 50 mm		
	1 pcs Metal Case		

BELIEVE
IN YOUR CHOICE

WWW.TEKIRO.COM